

Work Song

E♭ Instruments

Bass Line

♩ = 160 Dm

5 A⁷

9 Dm

13 D⁷ G⁷ Em^{7(b5)} B♭⁷ A⁷ Dm

17 Dm

21 A⁷

25 Dm

29 D⁷ G⁷ Em^{7(b5)} B♭⁷ A⁷ Dm

Work Song

B♭ Instruments

Bass Line

♩ = 160

1 Gm

5 D7

9 Gm

13 G7 C7 Am7(b5) Eb7 D7 Gm

17 Gm

21 D7

25 Gm

29 G7 C7 Am7(b5) Eb7 D7 Gm

Work Song

Bass Line

Bass

♩ = 160

Fm



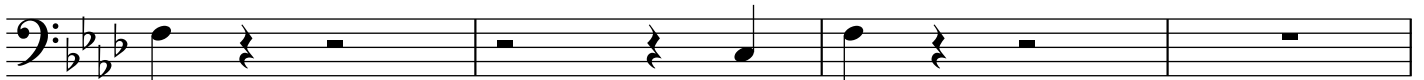
5

C7



9

Fm



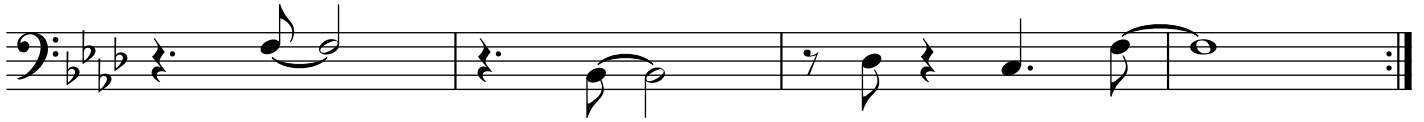
13

F7

Bb7

Gm7(b5)
Db7

C7 Fm



17

Fm



21

C7



25

Fm



29

F7

Bb7

Gm7(b5)
Db7

C7

Fm

